

## Accessible Voting Sessions with Dual Display Option

An add-on Accessible Voting feature to your ICE, called **Dual Display**, will allow both Accessible Voting Mode and Standard Voting mode to occur at the same time. If your ICE unit allows Dual Display Accessible Voting, please follow the steps below.

**DURING SETUP:** Connect the USB cord for the display to the monitor itself and lift the Ports door which is next to the CF2 door on the right side of the ICE and insert other end of the USB cord.

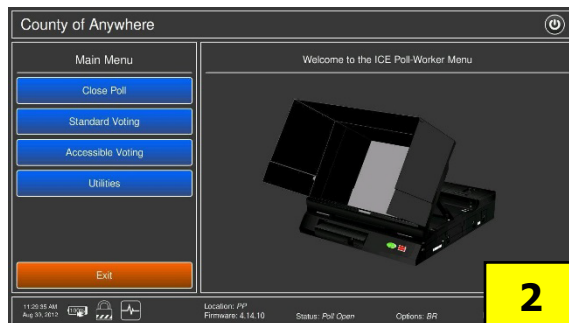


### Steps to Vote with Dual Display Functionality

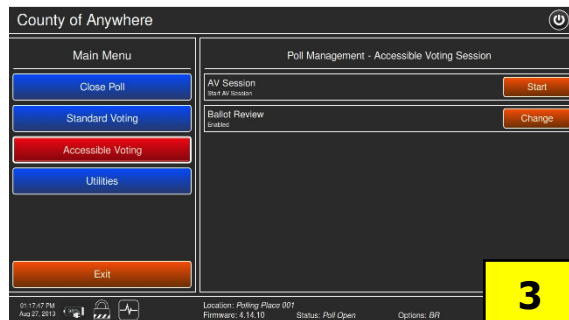
1. From the **System Ready – Please insert your ballot** screen, press and hold the Security Key onto the receptacle on the right side of the unit to prompt the **Main Menu** screen.



2. To commence an Accessible Voting session, press **Accessible Voting** on the **Main Menu**.



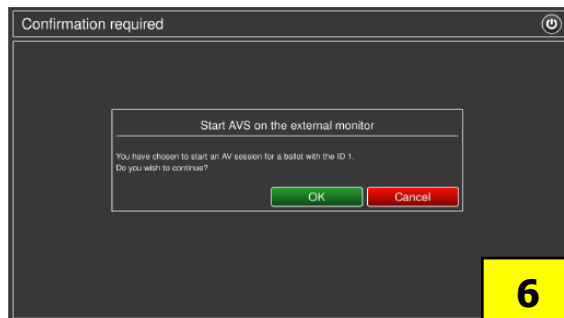
3. Make sure **Ballot Review** is set to **Disabled**. Accessible voters will have a chance to review their choices before their ballot is marked and cast. Press **Start**.



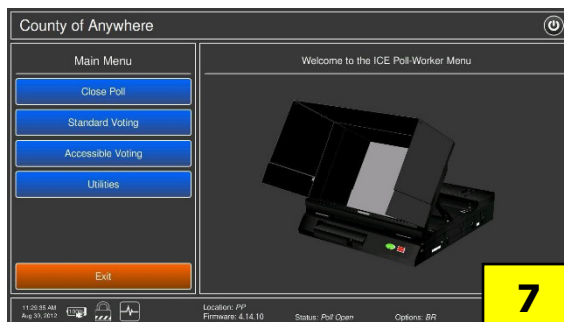
4. The **AVS Mode Selection** screen appears. Press **External Monitor** to continue or **Cancel** to return to the Main Menu.

5. On the **Enter Ballot ID** screen, enter the ballot style the voter will be using and press **OK** to proceed.

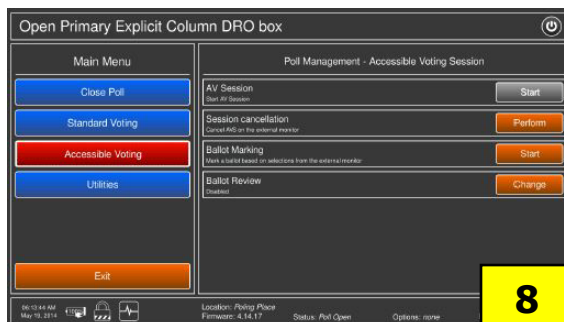
6. You'll see a message "**Start AVS on the External Monitor**". Press **OK**.



7. Now, the Accessible Voting session is initialized and moves to the second, external monitor. In the meantime, on the primary monitor, ICE Poll Worker Menu screen appears. At this point, **the poll worker** can resume a **Standard Voting** session.

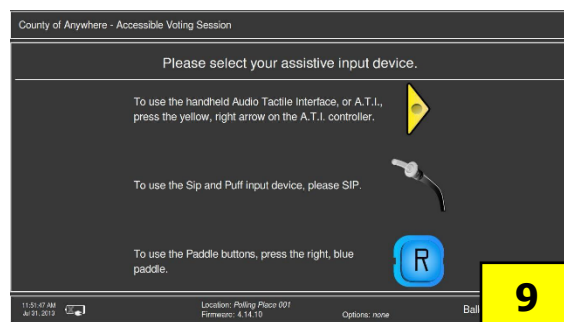


8. On the second monitor, **Poll Management - Accessible Voting Session** screen appears. At this point, the first option, AV Session is disabled while an option to cancel the session is not. In addition, you can enable or disable Ballot Review option.



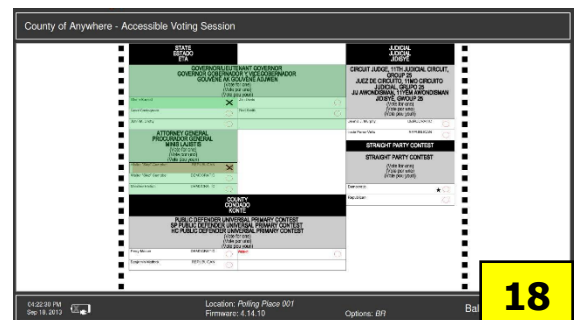
9. Select your assistive input device from options provided:

- To use the ATI, press the yellow, right arrow
- To use the sip and puff input device, please sip
- To use the paddle buttons, press the blue right paddle



10. To see your voting session on the screen, press the red X-shaped select button. To turn off the screen and vote with audio instructions, press the blue down arrow.

11. To play your voting session over audio headphones, press the red X-shaped select button. To continue the voting session without audio, press the blue down arrow.
12. A welcome screen is presented to the voter with accompanied audio instructions. Press the blue down arrow to continue the Accessible Voting session.
13. Navigational instructions are presented. The voter can increase or decrease audio volume by pressing the white buttons on the ATI. The round orange buttons change the audio's speed.
14. To move between contests, use the yellow left and right arrows. To enter a contest and move between candidates, use the blue up and down arrows. To select, or deselect a candidate, use the red X-shaped select button. To call for assistance or help, press the green spacebar at the bottom of the ATI.
15. To change the ballot zoom, press X-shaped select button. To accept the current zoom level and proceed, press the blue, down arrow.
16. To change the ballot contrast, press X-shaped select button. To accept the current contrast, and proceed, press the blue, down arrow. If you press the blue, up arrow, you will go back to previous screen.
17. To begin the Accessible Voting session, press the blue down arrow. To return to the previous screen, press the blue up arrow.
18. The ballot is presented on the screen. The voter will make their selections and follow the prompts.



19. After the voter has finished making their vote selections, the poll worker will briefly interrupt standard voting by inserting the **Security Key**, followed by pressing **Start** on the **Ballot Marking** option box.

20. Next, the poll worker will insert a blank ballot (which has the same ID as it is entered in the beginning of the session).
21. The **Confirmation** screen appears. Press **OK** to proceed with ballot marking or **Cancel** to return to previous. The system will then mark a ballot according to selections made on the external monitor. After the ballot is marked it will be dropped in the ballot box and recorded.
22. On the primary monitor, the tabulator is again ready for Standard Voting and ballots can continue to be inserted and tabulated.

